



7 VERNON CLOSE RETFORD, DN22 0RL

£330,000
FREEHOLD

We are delighted to present this exceptional four-bedroom semi-detached family home, which has been thoughtfully extended and comprehensively refurbished to an outstanding standard throughout. Finished with impeccable attention to detail, this stunning property can only be fully appreciated by internal viewing. Situated within the highly sought-after village of Grove, near Retford, this property enjoys an enviable setting surrounded by open countryside. The home is within walking distance of a charming local farm shop and village church, while still offering easy access to the excellent amenities of Retford. This exceptional home comprises a bright and airy entrance hall, leading into a beautifully proportioned living room featuring a charming log burner with an oak beam above. This flows seamlessly into the open-plan kitchen and sitting area, thoughtfully designed with a contemporary suite of units and integrated appliances. The sitting area offers a second log burner, creating a warm and inviting focal point, along with bi-fold doors that open out to capture stunning countryside views. Completing the ground floor is a well-appointed utility room with additional wall and base units, along with access to a stylish downstairs WC. To the first floor is a modern three piece bathroom suite, four double size bedrooms and en-suite to the master bedroom. Externally, the property boasts an attractive frontage with a generous driveway, providing ample off-road parking. To the rear, an impressive and expansive garden features a beautifully laid Indian stone patio with steps leading down to a well-maintained lawned area. The garden enjoys breathtaking countryside views, with the iconic Lincoln Cathedral visible in the distance, creating a truly idyllic outdoor setting.

Kendra
Jacob

Powered by
JBS Estates

7 VERNON CLOSE

- SPACIOUS EXTENDED SEMI-DETACHED FAMILY HOME • FOUR DOUBLE SIZE BEDROOMS • EN-SUITE TO THE MASTER BEDROOM WITH AIR CONDITIONING UNIT • TWO SITTING ROOMS • MODERN FITTED KITCHEN WITH INTEGRATED APPLIANCES & BI-FOLD DOORS • SITUATED OVERLOOKING COUNTRYSIDE VIEWS • EXTENSIVE REAR GARDEN WITH INDIAN STONE PATIO • SELLING WITH NO CHAIN • FULLY REFURBISHED THROUGHOUT TO A HIGH STANDARD • DRIVEWAY, PROVIDING AMPLE PARKING



ENTRANCE HALL

Welcoming entrance hall featuring a front-facing composite door, double-glazed obscure window, central heating radiator, and power points. Stairs leading to the first floor.

LIVING/DINING ROOM

A beautifully presented, spacious living and dining area with front-facing double-glazed bay windows, central heating radiator, and power points. The room benefits from stylish herringbone flooring and a charming log burner with an oak beam above. There is ample space for a large dining table and access through to the open-plan kitchen and sitting area.

OPEN PLAN KITCHEN/SITTING AREA

A modern fitted kitchen offering a range of high and low-level units with work surfaces incorporating a black composite sink and drainer with mixer tap. Integrated appliances include an induction hob, electric oven with extractor hood above, and dishwasher. Additional features include herringbone flooring, power points, a breakfast bar with seating for four, central heating radiator, and a rear-facing double-glazed window. The kitchen opens into the sitting area. A bright and inviting space with rear-facing bi fold doors that open onto the landscaped garden, showcasing stunning countryside views. Features include decorative wall panelling, power points, and a second log burner serving as a cosy focal point.

UTILITY ROOM

Fitted with matching wall and base units, work surfaces with an inset stainless steel sink, and plumbing for a

washing machine. Includes a side-facing double-glazed window, central heating radiator, herringbone flooring, and access to the downstairs WC.

DOWNSTAIRS WC

Comprising a low flush WC, central heating radiator, extractor fan, and continued herringbone flooring.

FIRST FLOOR-LANDING

With loft access, side-facing double-glazed window, central heating radiator, and access to four well-proportioned bedrooms.

BEDROOM ONE

A beautifully styled room featuring decorative wall panelling, fitted wardrobes, Air conditioning unit, central heating radiator, and power points. A rear-facing double-glazed window offers stunning countryside views. Access into the en-suite.

EN SUITE

Comprising a walk-in shower, wash hand vanity with drawers, low flush WC, wall-mounted LED mirror, herringbone flooring, heated towel rail, and extractor fan.

BEDROOM TWO

A generous double bedroom with fitted wardrobes featuring sliding mirrored doors, built-in storage cupboard, central heating radiator, power points and a front facing double glazed window.

BEDROOM THREE

A double bedroom with a rear-facing double-glazed window overlooking the countryside, central heating radiator, and power points.

BEDROOM FOUR

An L-shaped double bedroom with a side-facing double-glazed window overlooking countryside views, central heating radiator, decorative wall panelling, and power points.

FAMILY BATHROOM

Fitted with a panelled bath with shower over, vanity wash hand basin with drawers, low flush WC, towel radiator and extractor fan.

EXTERNAL

The property is accessed via double iron gates leading to a driveway, providing ample off-road parking. The extensive rear garden features an Indian stone patio, external power points, fenced boundaries, and a predominantly laid-to-lawn area. The garden enjoys breathtaking countryside views, with distant views of Lincoln Cathedral.

7 VERNON CLOSE





Kendra
Jacob
↑

7 VERNON CLOSE

ADDITIONAL INFORMATION

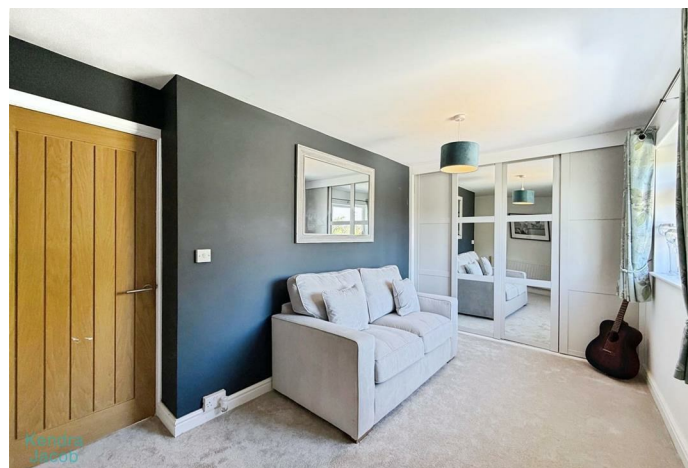
Local Authority – Bassetlaw

Council Tax – Band A

Viewings – By Appointment Only

Floor Area – 1321.40 sq ft

Tenure – Freehold



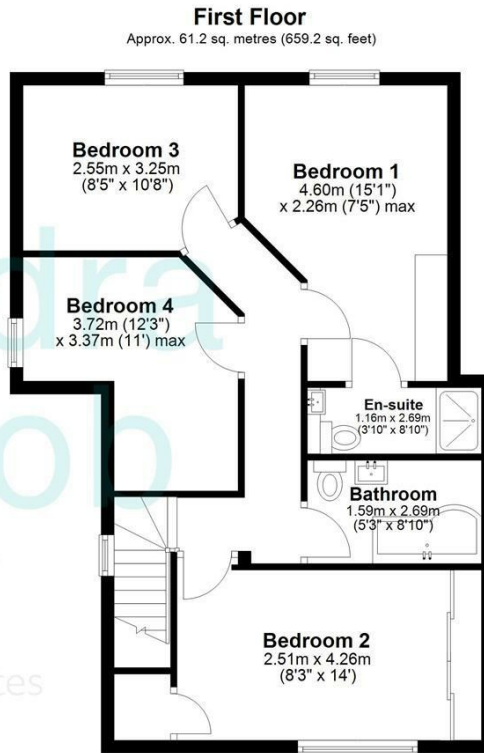
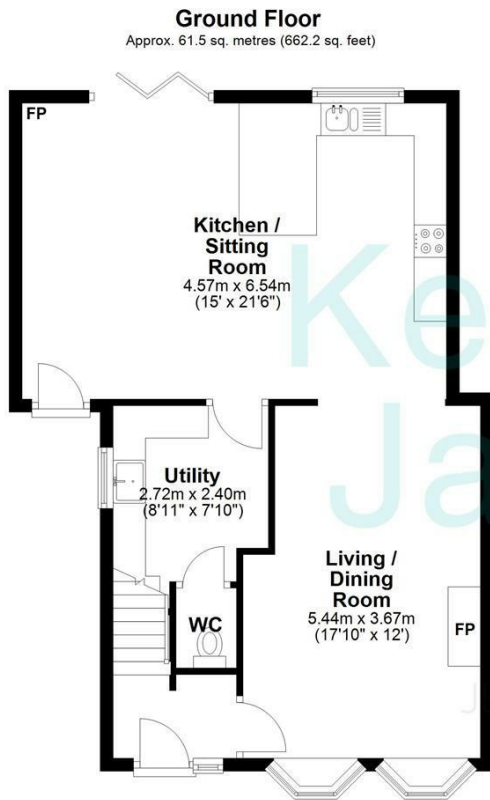
Kendra Jacob

Kendra Jacob

Kendra Jacob

Kendra Jacob

Kendra Jacob



Total area: approx. 122.8 sq. metres (1321.4 sq. feet)

The floorplans provided are for illustrative purposes only and may not represent the exact scale, dimensions, or specifications of the property. Measurements are approximate and should not be relied upon for any legal or financial decisions. It is the responsibility of the buyer, tenant, or their representatives to verify the accuracy of the details provided herein. For exact measurements, professional advice, or any other clarifications, please consult a licensed surveyor or property expert.

Plan produced using PlanUp.



Energy Efficiency Rating		
	Current	Potential
Very energy efficient - lower running costs		
(92 plus) A		
(81-91) B		
(69-80) C		
(55-68) D		
(39-54) E		
(21-38) F		
(1-20) G		
Not energy efficient - higher running costs		
England & Wales	EU Directive 2002/91/EC	

Agents Note: Whilst every care has been taken to prepare these particulars, they are for guidance purposes only. All measurements are approximate and are for general guidance purposes only and whilst every care has been taken to ensure their accuracy, they should not be relied upon and potential buyers/tenants are advised to recheck the measurements

Kendra Jacob Estate Agents
Six Oaks Grove
Retford
DN220RJ

01909 492 116
Kendrajacob@jbs-estates.com

Kendra Jacob

Powered by

JBS Estates